

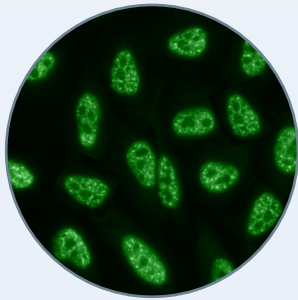
HumaScope Line

Affordable Microscopes Fitting to Your Needs

- > Modern, ergonomic design
- > LED illumination technology
- > High quality with excellent optics

CoreLab DX

HUMASCOPE LINE



Human

Diagnostics Worldwide

HumaScope Line

Proven microscopy solutions for every kind of laboratory

- > Perfectly suited for education, routine laboratories and advanced life sciences
- > Use in industry, research or educational institutions
- > Excellent optics
- > Comfortable eyepieces ensure fatigue-free and comfortable observation

State of the art technology

- > Optical parts with antifungal coating
- > Left side diopter adjustments ± 5
- > Transmitted & reflected LED illumination
- > Coated stage
- > Limit stopper system
- > Köhler illumination
- > Robust designed mechanics
- > Rechargeable batteries
- > Operating power for all models 230 / 110 V



Routine

HumaScope
Line

Stereo

Fluorescence



HumaScope Light^{LED}

Entry-level microscope

- > For healthcare in remote areas
- > Perfect for screening applications in cytology, hematology and QC of stains
- > No heat development
- > Long LED life up to 100,000 h
- > Maintenance-free – no replacement bulbs required

Remote care capability
30 hours without ext. power

Nosepiece

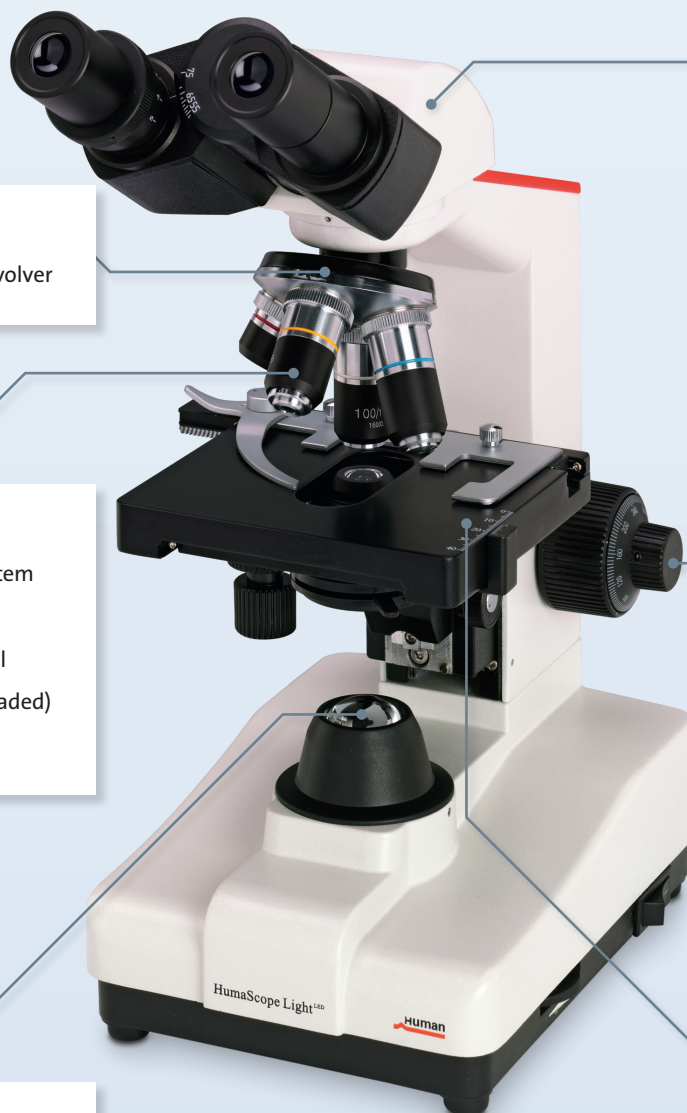
- > 4-positions forward revolver

Objectives

- > Achromatic optical system
Magnification:
4x / 10x / 40x / 100x oil
(40x / 100x = spring-loaded)
- > Antifungal coating

LED illumination

- > 3.6V, 0.3W
- > Adjustable brightness



Head

- > 360° rotatable binocular
- > WF 10x / 18 mm eyepiece
- > Interpupillary distance adjustment range 53–75 mm
- > Diopter adjustment ± 5
- > 30° inclination for ergonomical work
- > Compensation free

Focus system

- > Full stroke range: 15 mm
- > Stroke gradation: 1 μm
- > Gear transmission with adjustable tension knob

Stage

- > Allows holding two slides simultaneously
- > One hand slide exchange holder
- > Stage movement by roller guide with upper limit stopper system (rack & pinion)
- > Anti-scratch coating

Ordering Information

REF

HumaScope Light^{LED}

14400

HumaScope Classic^{LED}

Microscope for training and basic routine tasks

Remote care capability
30 hours without ext. power

Head

- > 360° rotatable binocular
- > WF 10x/18 mm eyepiece
- > Interpupillary distance adjustment range 53–75 mm
- > Diopter adjustment ± 5
- > 30° inclination for ergonomical work
- > Compensation free

Nosepiece

- > 4-positions reverse revolver (5-positions revolver available)

Objectives

- > Magnifications 40–1,000x
- > Semi-plan achromatic optical system
- Magnification:
4x/10x/40x/100x oil
(40x/100x = spring-loaded)
- > Antifungal coating

Focus system

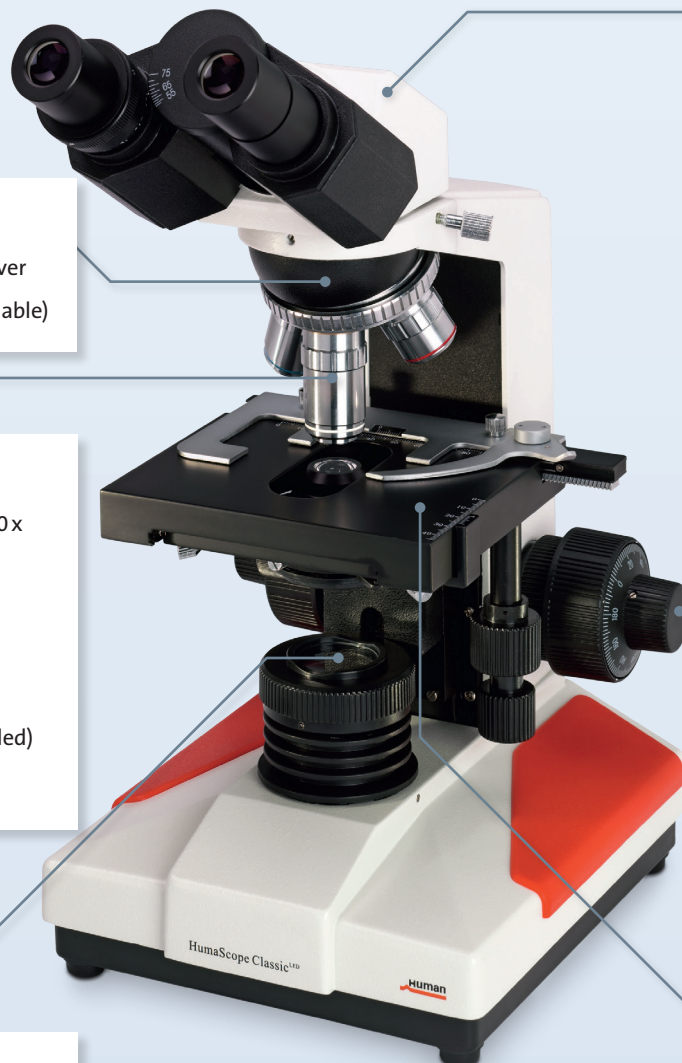
- > Full stroke range: 16 mm
- > Stroke gradation: 2 μm
- > Gear transmission with adjustable tension knob

Stage

- > Allows holding two slides simultaneously
- > One hand slide exchange holder
- > Stage movement by roller guide with upper limit stopper system (rack & pinion)
- > Anti-scratch coating

LED illumination

- > 3.6V, 0.3W
- > Adjustable brightness
- > Köhler illumination



Ordering Information

REF

HumaScope Classic^{LED}

14500

HumaScope Advanced^{LED}

Perfect for routine diagnostics and advanced screening

- > For healthcare in remote areas
- > Perfect for high utilization and screening application in histology
- > No heat development
- > Long LED life up to 100,000 h
- > Maintenance-free – no replacement bulbs required
- > Köhler illumination

Head

- > 360° rotatable binocular
- > WF 10 x / 18 mm eyepiece
- > Interpupillary distance adjustment range 53–75 mm
- > Diopter adjustment ± 5
- > 30° inclination for ergonomical work
- > Compensation free

Nosepiece

- > 5-positions reverse revolver

Focus system

- > Full stroke range: 16 mm
- > Stroke gradation: 2 μm
- > Gear transmission with adjustable tension knob

Remote care capability
30 hours without ext. power

Objectives

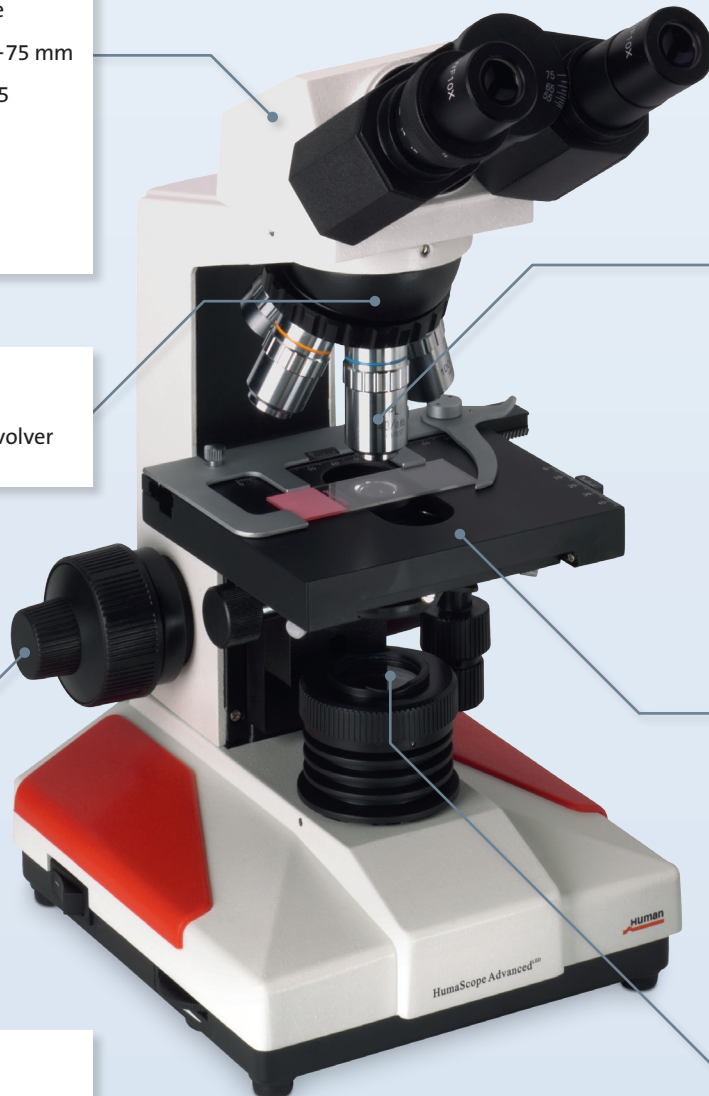
- > Magnifications 40–1,000 x
 - > Plan achromatic optical system
- Magnification:
4 x / 10 x / 40 x / 100 x oil
(40 x / 100 x = spring-loaded)
- > Antifungal coating

Stage

- > Allows holding two slides simultaneously
- > One hand slide exchange holder
- > Stage movement by roller guide with upper limit stopper system (rack & pinion)
- > Anti-scratch coating

LED illumination

- > 3.6V, 0.3W
- > Adjustable brightness



Ordering Information

REF

HumaScope Advanced^{LED}

Binocular _____ 14600

Binocular + trinocular head _____ 14601

HumaScope Premium^{LED}

Fullfills all needs of an ambitious user

Head

- > 360° rotatable binocular
- > WF 10 x / 22 mm eyepiece
- > Interpupillary distance adjustment range 53–75 mm
- > Diopter adjustment ± 5
- > 30° inclination for ergonomical work
- > Compensation free

Nosepiece

- > 5-positions reverse revolver

Focus system

- > Full stroke range: 19 mm
- > Stroke gradation: 2 μm
- > Gear transmission with adjustable tension knob

Objectives

- > Magnifications 40–1,000 x
- > Infinity corrected plan achromatic optical system
- Magnification:
4x / 10x / 40x / 100x oil
(40x / 100x = spring-loaded)
- > Antifungal coating

Stage

- > Allows holding two slides simultaneously
- > One hand slide exchange holder
- > Stage movement by roller guide with upper limit stopper system (rack & pinion)
- > Anti-scratch coating

LED illumination

- > 3.6V, 0.3W
- > Adjustable brightness
- > No heat development



Ordering Information

REF

HumaScope Premium^{LED}

Binocular 14700

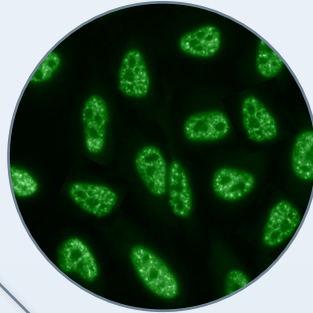
Binocular + trinocular head 14701

HumaScope Fluo^{LED}

Change your view and discover things in a different light

Trinocular tube

- > Lightpath selection
- > 100% camera observation



Fluorescence illumination

- > Up to 4 channels (LED 3.6V, 3 W)
 - Blue: exciting 420–485 nm, 515 nm
 - Green: exciting 460–550 nm, 590 nm
 - Violet: exciting 395–415 nm, 455 nm
 - UV: exciting 330–415 nm, 455 nm

Head

- > 360° rotatable binocular
- > WF 10x/22 mm eyepiece
- > Interpupillary distance adjustment range 53–75 mm
- > Diopter adjustment ± 5
- > 30° inclination for ergonomical work
- > Compensation free

Nosepiece

- > 5-positions reverse revolver

Focus system

- > Full stroke range: 19 mm
- > Stroke gradation: 2 μm
- > Gear transmission with adjustable tension knob

Objectives

- > Magnifications 40–1,000x
- > Plan achromatic optical system
- Magnification:
 - 4x/10x/40x/100x oil
 - (40x/100x = spring-loaded)
- > Antifungal coating

LED illumination

- > LED, 3 W
- > Adjustable brightness
- > Long LED life up to 100,000 h

Stage

- > Allows holding two slides simultaneously
- > One hand slide exchange holder
- > Stage movement by roller guide with upper limit stopper system (rack & pinion)
- > Anti-scratch coating



A convincing system

- > Fascinating price-performance ratio
- > Maintenance-free LED illumination
- > Robust designed mechanics
- > Fatigue proofed working

Excellent optics

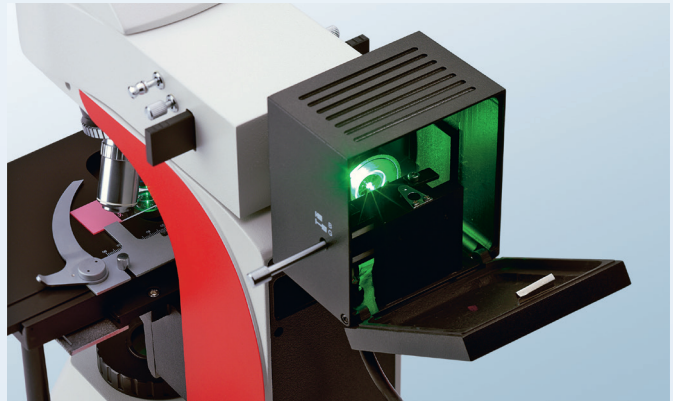
- > Infinity corrected plan achromatic objectives
- > Special fluorescence plan objective PL 40 / 0.85
- > Köhler illumination
- > Antifungal treated

Easy to use

- > Ergonomically designed operating elements
- > One hand slide exchange holder
- > Darkfield microscopy (optional)
- > Phase contrast (optional)

Latest LED illumination technique

- > Extra strong LED illumination
- > Constant bright light
- > No heat development
- > Low power consumption



- > Green LED fluorescence illumination
Filter: 460–550 nm / 590 nm



- > Abbe condensor with filter holder



Movie

Ordering Information

REF

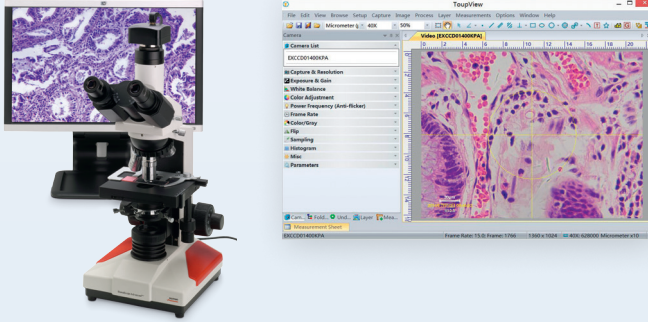
HumaScope Fluor^{LED}

2-channel blue, green LEDs	14800
2-channel blue, green LEDs with recharg. batteries	14804
3-channel ultra-violet, blue, green LEDs	14801
3-channel violet, blue, green LEDs	14802
4-channel ultra-violet, violet, blue, green LEDs	14803

HumaScope Line

High performance digital cameras

- > Excellent color fidelity and high frame rates (ultra-high performance CMOS sensor)
- > Supported by Windows/Linux/Mac OS
- > Real-time image transfer
- > Software included



Software feature

- > Measurement: Measure distances, angles and more on videos and images
- > Image stitching: Creating a large composite image from several individual acquisitions
- > Time laps capture, video watermark attachment and further various professional video functions
- > Luminance calibration
- > Multi language support



Digital camera USB

- > CMOS sensor
- > Robust integrated zinc aluminum alloy housing
- > Advanced video & image processing software
- > Supported by Windows/Linux/Mac OS

Ordering Information	REF
Digital Camera 5 MP (USB 2.0)	14000/866
Digital Camera 5 MP (USB 3.0)	14000/867
Digital Camera 10 MP (USB 2.0)	14000/877
Digital Camera 10 MP (USB 3.0)	14000/878



Digital camera HDMI

- > Smart, independent and easy operation:
 - HDMI interface to connect with any HD screen
 - User interface operation with USB mouse
 - SD card slot for data storage
- > High sensitivity Sony CMOS sensor
- > 0.78 megapixel
- > High resolution (1280 × 720 pixel)
- > High frame rate, perfect color reproduction

Ordering Information	REF
Digital Camera 0.78 MP (HDMI)	14000/210*

* The camera has a software embedded, could be directly connected with your display. The pictures could be saved to the SD storage device.

HumaScope Line

Accessories

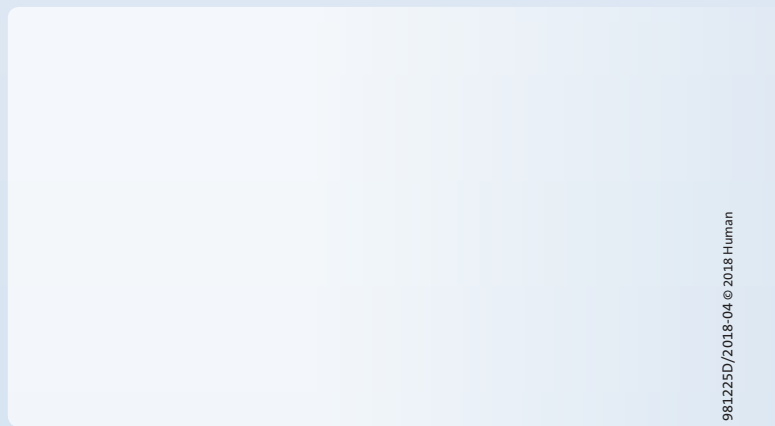
	REF	Fluo ^{LED}	Premium	Advanced	Classic	Light
Trinocular Head	14000/13			•	•	
Trinocular Infinity Head	14000/15		•			
Eyepiece 10 x 18 mm view field	14000/17			•	•	
Eyepiece 10 x 20 mm view field	14000/18		•			
Eyepiece 16 x 11 mm view field	14000/19		•	•	•	•
Eyepiece 20 x 11 mm view field	14000/20		•	•	•	
Eyepiece 10 x 10 mm Micrometer with 100 Division 20 mm View Field	14000/22		•			
Objective achromatic 4 x	14000/23					•
Objective achromatic 10 x	14000/24					•
Objective achromatic 40 x	14000/25					•
Objective achromatic 60 x	14000/26					•
Objective achromatic 100 x	14000/27					•
Objective achromatic 20 x	14000/30			•	•	
Objective achromatic 60 x	14000/32			•	•	
Objective achromatic 100 x	14000/33			•	•	
Objective semi plan 20 x	14000/36					•
Objective plan 10 x	14000/40			•	•	
Objective plan 20 x	14000/41			•	•	
Objective plan 40 x	14000/42			•	•	
Objective plan 60 x	14000/43			•	•	
Objective plan 100 x	14000/44			•	•	
Objektive plan infinity 20 x	14000/47	•	•			
Dark field condensor dry	14000/52	•	•	•	•	•
Dark field condensor oil	14000/53	•	•	•	•	•
C-mount adapter 0.4 x for trinocular head	14000/54	•	•	•	•	
C-mount adapter 0.5 x for trinocular head	14000/80	•	•	•	•	
Simple polarisation kit	14000/58	•	•			
Simple achromatic phase contrast kit	14000/59			•	•	•
Turret plan phase contrast kit	14000/61			•	•	
Turret plan infinity phase contrast kit	14000/62	•	•			
Stage micrometer 1 mm / 100 division	14000/68	•	•	•	•	•

	REF	Fluo ^{LED}	Premium	Advanced	Classic	Light
Mirror set	14000/71			•	•	•
Blue filter	14000/72	•	•	•	•	•
Frosted filter	14000/73	•	•	•	•	•
Green filter	14000/74	•	•	•	•	•
Yellow filter	14000/81	•	•	•	•	•
Rubber eyeguard (Set of 2)	14000/82		•	•	•	•
Plastic box	14000/83			•	•	
Plastic box light	14000/84					•
Eyepiece pointer 10 x 18	14000/125					•
Eyepiece pointer 10 x 18 plan	14000/126			•	•	
Eyepiece pointer 10 x 20 inf.	14000/127		•			
Eyepiece pointer achromatic 16 x 11 mm	14000/128	•	•	•	•	•
Eyepiece pointer fluo 10 x 22 mm	14000/131	•				
Cleaner set (lens cleaning fluid, lens cleaning rods, lens cleaning tissues, air duster microfiber cloth, dust bellow)	16160	•	•	•	•	•

Accessories for HumaScope Stereo

	REF
Eyepiece WF10X (22 mm)	14900/1
Eyepiece WF15X (15 mm)	14900/2
Eyepiece WF20X (12 mm)	14900/3
Eyepiece WF25X (9 mm)	14900/4
Recticle eyepiece WF10X (20 mm) 0.1 mm/Div1	14900/5
Objective 0.5X W.D. 137 mm	14900/6
Objective 0.75X W.D. 103 mm	14900/7
Objective 1.5X W.D. 48 mm	14900/9
Objective 2X W.D. 29 mm	14900/10
Trinocular adapter 1X for CCD camera	14900/11
Trinocular adapter 0.5X for CCD Camera	14900/12

Your local distribution partner



981225D/2018-04 © 2018 Human

